

# SOLID SOLUTION DESIGNS

## Projectile Information

### Name

SSD 152 grain Valkyrie

### Caliber & Twistrate

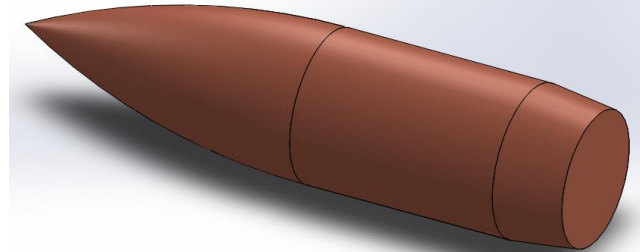
.308 (.30) , use with 1:11 twist or faster

### Effective range:

1.000m with 900 m/s

### Accuracy to be expected:

'Hole-in-hole' at 100m



Comparison with other bullets	
	True BC G1
SSD 152 grain	0.383
Lapua 155 grain Scenar GB491	0.357

### Suggested OAL

The bullet should never be seated deeper than the beginning of the ogive. Also the bullet should not touch the lands and fields of the barrel, in order to prevent overpressure.

### Examples:

.308

Minimal: 67,53 mm

Maximum: 75,0 mm (should not touch the rifling)

Quickload information		
BC G1	0.383 (at 900 m/s)	
Weight	152 grain	9,84 g
Length	30,98 mm	1,219"
Velocity band	2500 - 3000 fps	762 - 914 m/s

### Suggested Powder

Vihtavuori N140/N150

Accurate 2520

Rifle: .308 Barrel: 28 inch Twist: 1 in 11"				
Primers: Large Rifle				
Cases: Lapua, trim-to length 51,10 mm (2.011")				
	OAL	Powder	Velocity	Velocity
.308 Win	70.0 mm	40.0 gr N140	2559 fps	780 m/s
.308 Win	70.0 mm	43.0 gr N140	2772 fps	845 m/s
.308 Win	70.5 mm	40.5 gr N140	2582 fps	787 m/s
.308 Win	71.0 mm	41.0 gr N140	2624 fps	800 m/s
.308 Win	71.5 mm	41.5 gr N140	2673 fps	815 m/s
.308 Win	71.5 mm	43.5 gr N140	2834 fps	864 m/s